

SEW WHAT'S NEW



Edmond Quilt Guild
P O BOX 1843, Edmond, OK 73083
Website: www.eqg.us
E-Mail: edmondquiltguild@yahoo.com

Volume 10,
Issue 1

January 2012

OFFICERS:

President:
Alice Kellogg
wonderland48@cox.net

Vice-President
Patti Pickhard
papickhard@yahoo.com

Secretary:
Lisa Stroble
lisaastroble@sbcglobal.net

Treasurer: 359-1161
Sharon Eaton
skeaton@ionet.net

Membership: 919-1470
Missy Reid
missyreid@cox.net

Programs: 946-0817
Brenda Esslinger
blee0115@aol.com

Communications: 340-2542
Linda Gaither
lsgaither@yahoo.com

Loving Touch Committee: 924-2598
Vicky Wyalie
vicky.wyalie@dvn.com

Hospitality Committee:
Terri Findley
tcfindley@sbcglobal.net

Quilt Show Chair: 348-3594
Sherry Massey
simplelife1@cox.net

Web Master: 205-3802
Don Lusk
luskd@yahoo.com

Mission Statement:

The mission of the Edmond Quilt Guild is to preserve, teach and share the history and art of quilting.



The Edmond Quilt Guild meets on the third Tuesday of each month at 7:00 pm at the Memorial Road Church of Christ, 2221 East Memorial Road, Edmond, Oklahoma

NQA Chapter OK871

President's Report— Alice Kellogg

I had a wonderful Christmas with all my family around me. Everyone was happy and mellow. The food was great and the presents were secondary. Just as it should be! I hope yours was as good as mine.

A kind farewell to Becki Davis, Nancy Forrest, Gloria Kreuer, Becky Beierle and Barb Buettner. Thank you for your service to the guild. Personally, I appreciate everything that you have done for the past two years and the guild has benefited from all your hard work.

Welcome to Linda Gaither, Missy Reid, Lisa Stroble, Patti Pickhard and Terri Findley. Thank you for volunteering to be board members and committee chair. Again, I personally appreciate your willingness to serve and look forward to working with you through the upcoming year.

Now it is time to think about the New Year and what challenges and opportunities we will have as a guild. Put your head into the quilt show! If you have any concerns or suggestions concerning the guild, please do not hesitate to approach me. I will always listen and either say, "what a great idea!" or tell you why we can't do that.

To you and yours, Happy New Year and happy stitching.

Alice Kellogg

Vice-President's Report – Patti Pickhard

As your new vice president, I know it is going to be a busy year, especially with the quilt show this summer. But, as they say, "that ain't all!" I am still formulating initial activities for 2012 and I am open to your ideas, too. Remember: this is YOUR guild!

I look forward to getting to know all of you and working with the board to make this a terrific year.

Happy Quilting,

Patti Pickard

Inclement Weather Policy

We don't have bad weather yet, but just in case this is our "bad weather" policy:

1. If the Edmond Public Schools are closed due to the weather, then the guild meeting will be cancelled also.
2. Communications will try to send out a timely email announcement regarding cancellation of the meetings. So you can also check your email for a "blast" if you have questions.

But the biggest thing to remember

Although we want you at all the meetings, we want

you safe!! If you don't think the weather is safe for you to drive, please stay home.. Be safe!!

OUT & ABOUT

Oklahoma City Winter Quilt Show, Oklahoma City, OK Jan 12-14, 2012. For more information, go to: www.qscexpos.com.

Bear Creek Quilt Guild, Keller, Tx - February 17 & 18, 2012

Rio Grande Valley Quilt Guild show, McAllen, TX, Friday & Saturday, Feb. 24 & 25, 2012

Quilter's Guild of Dallas, March 9-11, 2012

Crossroads to Texas Quilt Guild, Killeen, Tx, Mar 30-31, 2012

Woodlands Area Quilt Guild show, Apr 13-14, 2012

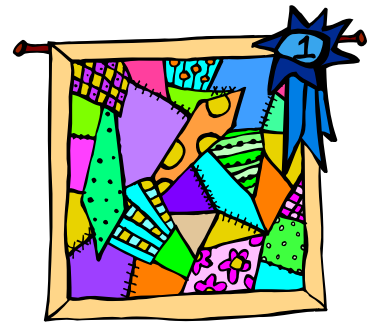
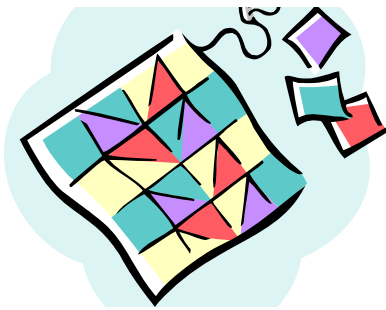
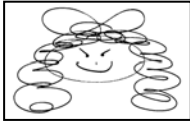
"Not Your Grandmother's Quilt," Muskogee, OK Apr 20-21, 2012. For more information got to www.muskogeeareaquiltersguild.com.

Program Report – Brenda Esslinger

I'm sorry I wasn't at the Christmas party, but I heard it was a fun time!

In January and February Judy Elliott and I will help you get ready for entering our upcoming quilt show (August 3&4, 2012). More programs are in the works and will be announced later.

Brenda Esslinger



ALL ABOUT THE QUILT
 Long Arm Quilting
 Quilts for Sale
 405 547-2010 ♥ sandraacree@att.net
 Sandra Acree


Quilting Post
 Monday thru Friday 9-6 Saturday 9-4
 717 South Main Street * Stillwater, OK 74074
 405-624-0303
 Email: quiltingpost@sbeglobal.net
 Website: www.stillwaterquiltingpost.net
 Terri Gibbs, Proprietor

Nana's Fabric Shop
 6933 E. Waterloo Rd.
 Suite #4
 Edmond, OK 73034
 (405) 715-0300
 I-35 exit E. Waterloo Rd. go 1.4 miles

Oklahoma QUILTWORKS
 Oklahoma's Largest Quilting Store
 Barbara P. Stanfield, Owner
 9323 N. Pennsylvania Oklahoma City, OK 73120
 405-842-4778
 quilters@okquiltworks.com
 www.OKQuiltworks.com

THE RABBIT'S LAIR


114 S First St.
Historic Downtown Rogers, AR
479-636-3385



9:30-5
Mon-Sat

A completely renovated shop -filled with fiber and fabric from brights and reproduction. 1,000's of patterns and books, and fun creative people to help!

- Over 3,000 bolts of fabric
- Complete lines from Jo Morton, Kaffe Fassett, Amy Butler, Judy Rothermel, Moda & much more!
- Kits, clubs & fun!
- Complete line of Weeks Wood & thread, gentle art thread, and a great assortment of buttons
- We carry Lynette Anderson, Threads that Bind and many exclusive patterns!




Creative Fabric & Fiber Center
www.therabbitslair.com

Toadally Awesome Quilting

Brenda Esslinger

3428 NW 26th Street
Oklahoma City, OK 73107
405-946-0817
blee0115@aol.com



Nancy's Trunk

Fabric – Books – Patterns – Notions - Classes
Vintage Featherweight Sewing Machines & Access.

6 Mi. E. of Perkins, OK on Hwy 33
Open Tues. 10-8 Wed-Thur-Fri 10-5 Sat. 10-4
Closed Sun. & Mon. - 405-413-5037

Sooner Quilts

Quilting Supplies & Custom Longarm Quilting
JANOME
Michelle Schroeder

7821 S Sooner Rd
Guthrie, OK 73044

405.282.2070
www.SoonerQuilts.com



Quilter's Corner

Holiday Square Shopping Center
1110-14 S. Air Depot Midwest City, OK 73110
Phone # (405) 455-5005

*Quilting and Hand Embroidery
Books, Classes, Fabrics, Patterns and Notions
Pfaff Machines and Supplies*

Open Mon - Sat 10 AM to 6 PM - Thurs Until 8 PM
quilterscorner@coxinet.net
Maru Dubois

Membership — Missy Reid

As the new membership officer, I would like to say thank you to Becki Davis for her years of service and also for helping me get started.

For our December party we had 45 members present. There were 2 visitors, and 1 new member. I would like to welcome our new member: Wendy Wells.

A big thank you to the members who renewed their membership for 2012. You can download a membership application on our website www.eqg.us. The dues are \$20.00 a year (Jan-Dec).

Remember in order to participate in the quilt show your dues for 2012 must be paid by the January meeting!

We are still taking donations for door prizes. Thank you to Bonnie Bowman for her donations.

Missy Reid

Quilt Show Update — Sherry Massey

A couple of reminders: Please continue to look for like-new items you can donate for door prizes for the show. Books, rulers, patterns, notions, fat quarters, etc. Barbara Tobin will take your donations at monthly meetings. Orders and money will be taken at the January meeting for quilt show t-shirts.

Also, EQG will have a booth to sell tickets for the raffle quilt at the Winter Quilt Show. Please contact Missy Reid, missyreid@cox.net, to put your name on the list.

There will be more information at our meeting this month.

Sherry Massey



Loving Touch — Vicky Wyalie

Take those leftovers and create a colorful, soft, ray of sunshine for a preemie (22 X 22) or may a placemat for a mobile meals recipient (14 X 18). And for the Edmond Hope Center how about a youth quilt (40 ish X 40 ish).


Give me a call and I'll be glad to come pick it up. My cell is 924-2598.

Happy New Year,

Vicky Wyalie



Country Collections
by Hart



Open: 10-5 Tues-Fri
Sat til 4

113 W Main
Moore, OK 73160
405/799-0773

Rug Hooking * Punch Needle * Needle Felting
WOOL * Homespun Flannels * Country Fabrics
Stitchery * Applique * Quilting Classes
Patterns & Books
Decorative Painting Classes & Supplies

Just 3 blocks east of I-35 on Main in Moore www.CountryCollectionsbyHart.com

Reveille Quilt Studio
Longarm Quilting, Memory & T-shirt Quilts
Kerry Fisbeck

2000 Reveille Road
Edmond, OK, 73013
405.812.373
kerryfizz@sbcglobal.net

Karper Quilting Service
Marilyn Karper



4008 NW 44th Street
Oklahoma City, Oklahoma 73112
405-946-5858 days
405-945-0639 eves
405-650-4369 cell

marilyn@karperquilting.com
www.karperquilting.com

The Savage Quilter

Fabrics, Patterns, Books, Notions & Classes

6815 N May Ave. 405.840.1466
www.thesavagequilter.com debbiesavage@coxinet.net

PFAFF®

Fun to Sew



Creative Sewing Center

Realize your quilting potential!

quilt expression™ 4.0
Sewing Machine

http://www.pfaffusa.com/Expression_4.htm



222 stitches • 9 mm stitches

Original IDT™ - Integrated Dual Feed
Ensures even fabric feed from both the top and bottom.
Great for working with multiple layers.

Large sewing space
10 inches to the right of the needle for large quilts

Thread snips
Automatically cuts top and bobbin thread at the touch of a button

Two free-motion modes
Choose between Sensomatic or Spring foot free-motion mode for best results with various techniques and fabrics

Automatic presser foot lift
Raises the presser foot to pivot position automatically when the needle is set to stop down. Perfect for appliqué!

Stitch sequencing and memories
Combine and save stitches in the included memories
20 sequencing and 20 personal stitch settings

Fun to Sew Creative Sewing Center
937 SW 25th, Suite F, Moore, OK 73160
405/794-6900

www.funtosew.com

The BEST BUY SEAL is a registered trademark of Consumers Digest Communications, LLC, used under license.

Grannie Annie's Quilt Shop

8054 Hwy. 16
Beggs, OK 74421
(2 miles west of Hwy. 75 on Hwy. 16)
918-267-1551
E-mail: thequiltshop@beggstelco.net

Hours

Tues., Wed., Fri. 9 am to 5pm
Thurs. Noon to 5pm
Saturday 9am to Noon
Closed Sunday and Monday

Fabrics include Moda, Maywood, Quilting Treasures,
David's Textiles, Benartex and many more.
Block of the Month—Underground Railroad
Book \$14.95 Block: \$5./month Starts in August; buy one or buy the set!
Lots of patterns, books and notions. Come in, sit and chat awhile at
the old oak table. I look forward to seeing all of you!

****Guild members receive a 10% discount!****

January Birthdays

Lola Blake	3-Jan
Kris Mitchell	6-Jan
Custodia Ewald	8-Jan
Shonda Lovelace	9-Jan
Jere Marcotte	9-Jan
Brenda Esslinger	15-Jan
Jeannie Sikes	17-Jan
Sarah Njuguna	18-Jan
Joy Douglas	19-Jan
Terri Findley	19-Jan
Kathy Gale	20-Jan
Missy Reid	21-Jan
Gailynn Phelps	22-Jan
Patti Pickhard	22-Jan
Toni Galley	22-Jan
Sue Esparza	25-Jan
Cameron Potter	29-Jan

